

## TWILL - there's a point

is a title I sometimes give my hairshirt. The hairshirt itself came about after I'd been giving a number of workshops on horsehair weaving, always getting the question "Where is your hairshirt, then?"

I wanted the fabric to be similar on both sides, but also to give the horsehair emphasis. This to me always spell "dräll", which word I have never been able to translate to the full. (In this case it means turned twill.) For some forgotten reason I decided the base structure should be a 2/1 twill, and I thought it would have a little more interest if threaded in points.

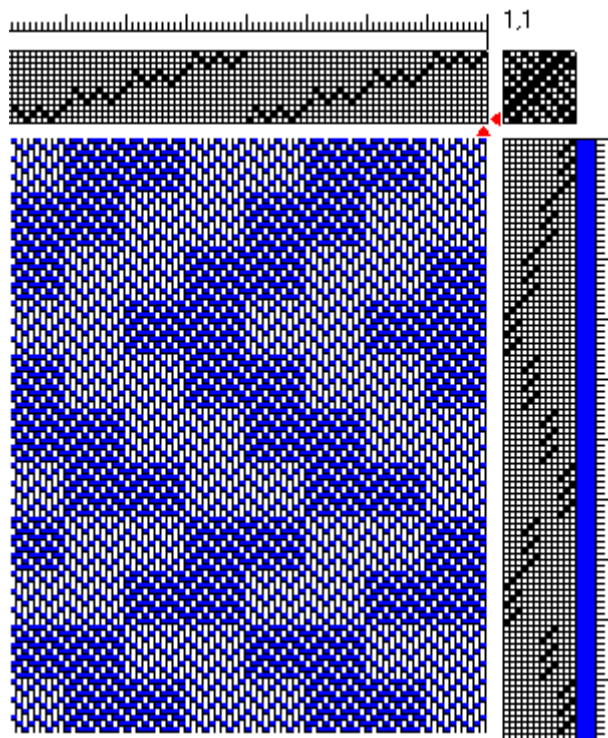
For fun, I decided the pattern should change around the shirt. The nature of the horsehair (no drape, pliable only on warp direction, and possibly difficult to sew) made it natural to turn the fabric, ie to let the weft go vertically in the finished "shirt" (which is actually a vest). Therefore, the patterns should change along the warp.

As the fabric should be similar on both sides, I had to have an even number of blocks - so I decided the pattern should mimic a straight 2/2 twill, going in one direction from front to mid back, make a point there, and change to a broken 2/2 twill for the second front.

As the structure is a 2/1, 1/2 twill and the pattern is a 2/2 twill, it is not really a "self-similar" weave, but..

Whith horsehair for weft the warp sett has to be more open than whith yarn for weft, as the horsehair can break. It has to be beaten hard, or the warp will shift along the fibers. This means one usually has at least twice the number of wefts than of warps. This, again, means the points in the threading get very compressed, and should I do it again, I would do it with 3/1 straight twill as the basic structure.

This is the draft I used:



but this is what it looked like:

